

WELCOME TO PARSONS HOUSE



PARSONS HOUSE

We are delighted to present Parsons House, our latest exclusive residential development in the flourishing North East of England. Ideally located in Washington, Sunderland, Parsons House benefits from a prime position between Newcastle and Sunderland, making it a highly desirable location for both residents and investors.

With convenient access to major transport networks, including the A1(M) and A19, Washington serves as a hub for work, leisure, and lifestyle, offering the best of the North East within easy reach.

Parsons House was meticulously refurbished, transforming a former office building of 40 quality specification Studio, 1- and 2- Bedroom Apartments. Each apartment has been thoughtfully designed to accommodate modern lifestyles, with a focus on creating bright, spacious interiors that prioritise comfort and style.

Large windows allow for an abundance of natural light, while many apartments boast panoramic views across Washington, offering a sense of tranquillity within an urban setting. High-spec finishes and premium fixtures have been used throughout, ensuring every detail —from flooring to kitchen fittings— reflecting a commitment to quality and longevity.

40

contemporary
1 and 2 bedroom
apartments





Just **3** miles from the Nissan automotive plant — Europe's largest car manufacturing facility, spanning an impressive 362,000 sqm. employing over 6,000 people.



This unique residential project is situated just 3 miles from the Nissan automotive plant—Europe's largest car manufacturing facility, spanning an impressive 362,000 square metres and employing over 6,000 people. This economic powerhouse supports a strong local economy, creating significant demand for quality housing options.



EXTERIOR/ PARKING - AERIAL VIEW



POST BOXES



ON-PREMISE EV CHARGING



BRIGHT LIVING ROOM



MODERN KITCHEN



QUALITY FITTINGS



QUALITY APPLIANCES



BRIGHT & SPACIOUS BEDROOM



MODERN BATHROOM

SPECIFICATIONS

Bathroom

Curved Bath Screen	Essential
Rectangular Steel Bath Tub	Roca Carla
Thermostatic Shower Kit	Bristan Zing
Bath Mixer	Alterna Ponza
Basin Mixer	Alterna Ponza
Pan & Seat Back to Wall	Alterna Bristol
Pan & Seat Soft Close	Genoa
Shower Tray	Kartell
Hinged Shower Glass Door	Kartell
Shower Side Panel Glass	Kartell
Flush Panel Chrome	Roper Rhodes
Concealed Dual Flush Cistern	Roper Rhodes



Kitchen

Fridge	Lamona
Washer Dryer	Beko
Dishwasher	Lamona
Electric Hob	Lamona
Cokker Hood	Lamona
Oven	Lamona
Sink	TBC
Mixer	TBC

General

Sockets / Switches / Pendants	Click Scolmore / MK (Honeywell)
Flooring (Bedrooms)	Carpet Drayton Heather
Flooring (Kitchen, Living, Hallway))	Eternity Commercial LVT
Light Fittings	TBC
Windows	uPVC Double Glazed
Internal Doors	Howdens

Please note that the inclusion and specifications of appliances within this apartment are subject to confirmation by the developer. While the current list represents anticipated provisions, final appliance models, brands, and availability may vary.

PARSONS HOUSE

Welcome to Parsons House, a development of 40 contemporary apartments located in the up-and-coming town of Washington, Sunderland. Situated in a thriving area of growth and regeneration, this development is perfectly positioned to cater to the growing demand for high-quality homes, especially among young professionals working in the area's booming commercial sector. Key employers nearby include the renowned Nissan plant - the UK's largest automotive manufacturing facility - as well as ASDA, Rolls Royce, Amazon and BAE systems to name just a few.

For investors, Parsons House presents an exceptional opportunity with apartments available below market value. Built to an impeccable standard, each unit boasts high-end fixtures and fittings, ensuring both quality and appeal. With a significant shortage of modern, well-built housing in the area, the development is poised for strong rental returns and long-term growth potential.

Parsons House isn't just an investment—it's your gateway to one of the most promising property markets in the North East.



Major employers in the area include the renowned Nissan plant—the UK's largest automotive manufacturing facility in the UK.

NORTH EAST RISING



2.65m

Population of
North East



71k

Businesses
operating
in North East



Highest

Regional business
growth rate outside
of London



120k

Students in
the region



£54b

Worth of North
East Economy



£2b

Worth of IT
and Digital
sectors



116k

Working in
manufacturing incl
58k specialists



11.7%

Price growth
over the next
5 years



4.6%

Increase in
house prices



4k Jobs / £3b

To be added to local
economy by North East
Investment Zone

WASHINGTON'S HOUSING MARKET: GROWTH AND OPPORTUNITY

Washington's housing market is undergoing a period of steady growth, underpinned by the town's economic resurgence, population expansion and regeneration. With property prices remaining competitive compared to neighbouring regions, the area offers significant potential for both capital appreciation and rental yield growth.

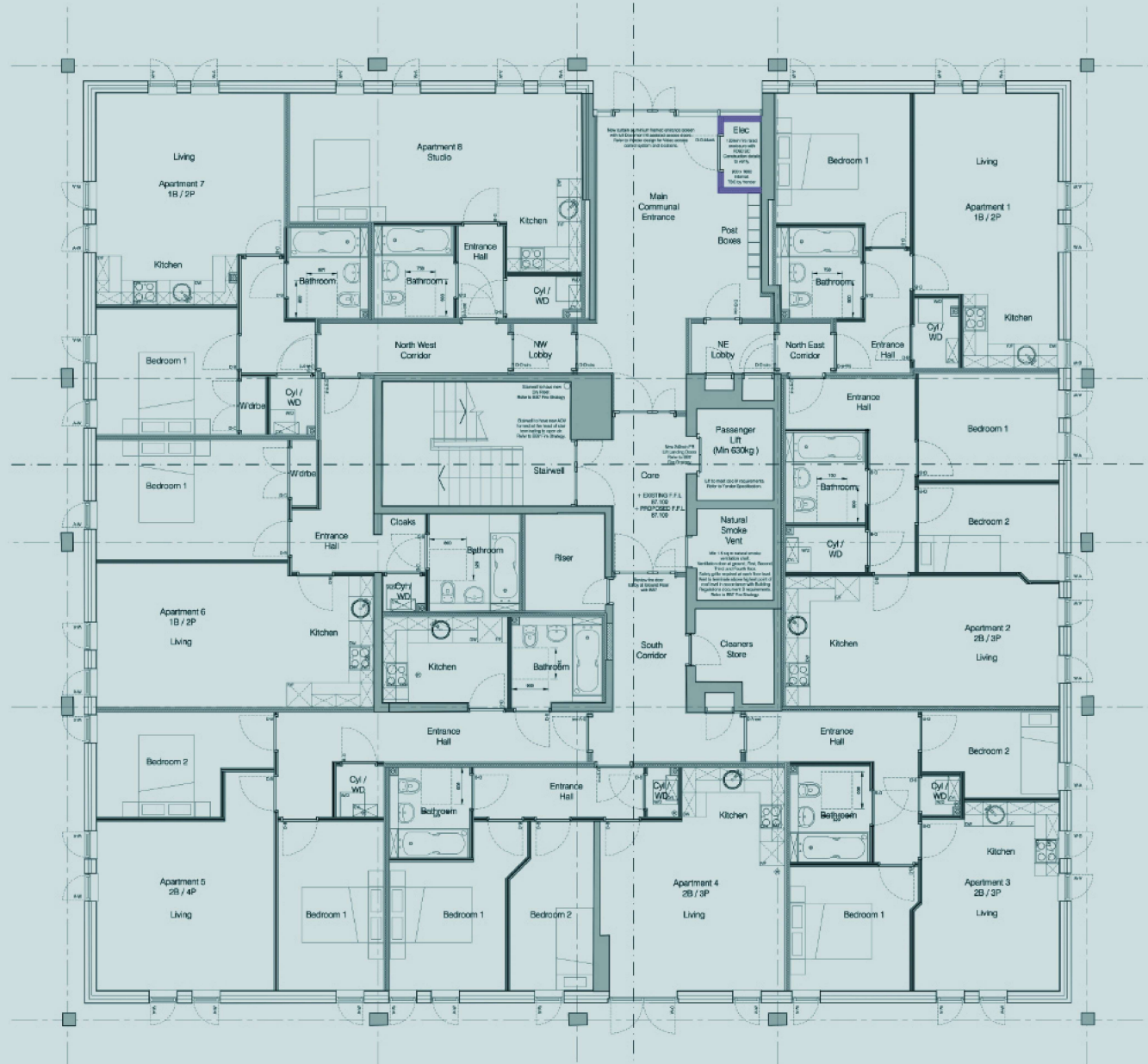
As of 2024, the average house price in Washington stands at approximately £159,000, offering exceptional value compared to the regional average of £188,000 and the national average of £338,000. While prices have stabilised recently, forecasts indicate gradual increases over the next few years as demand continues to outpace supply.



The town's transformation presents a compelling opportunity for investors seeking to capitalise on a market poised for sustained growth and development.

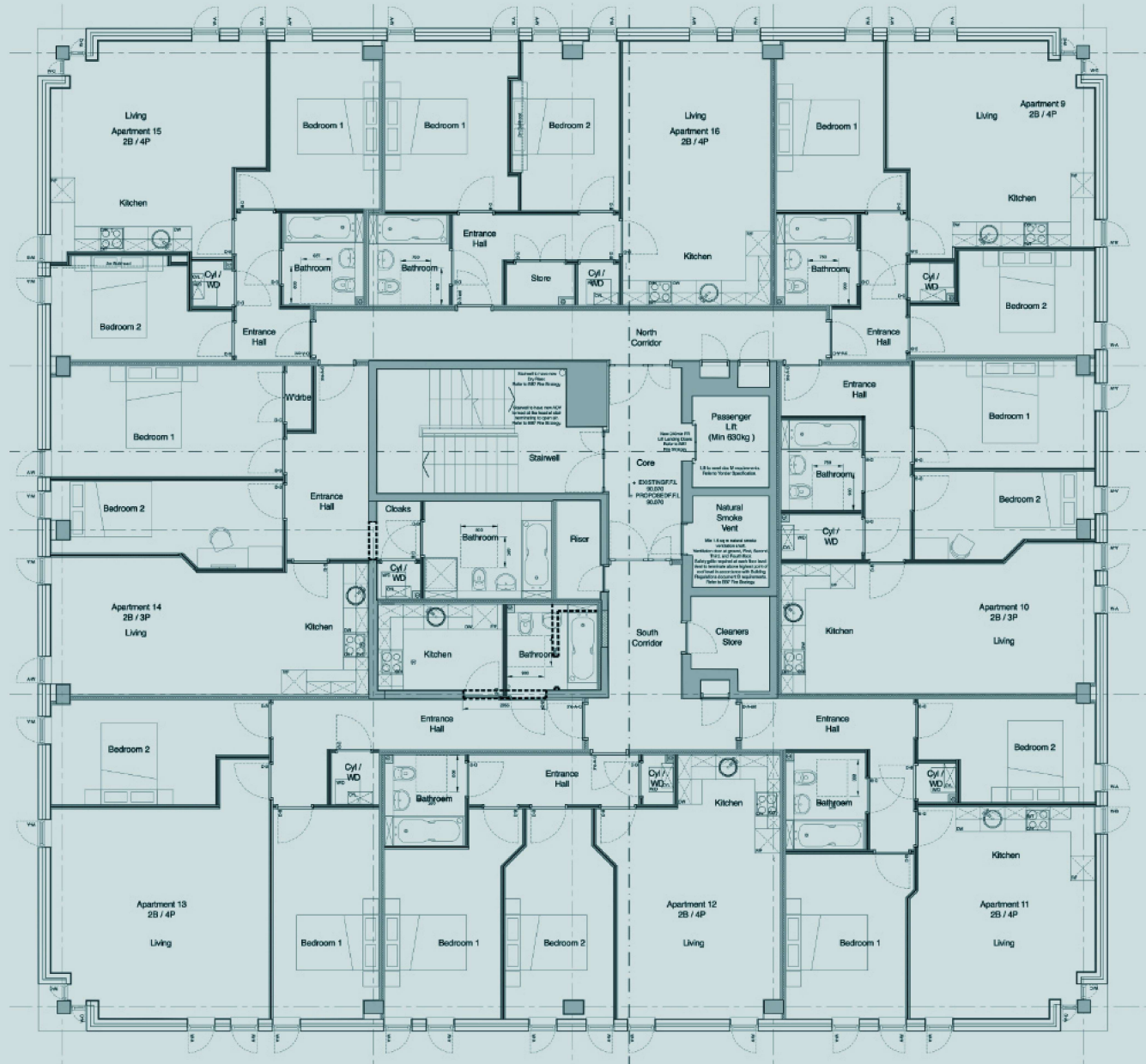
FLOORPLANS

Ground Floor



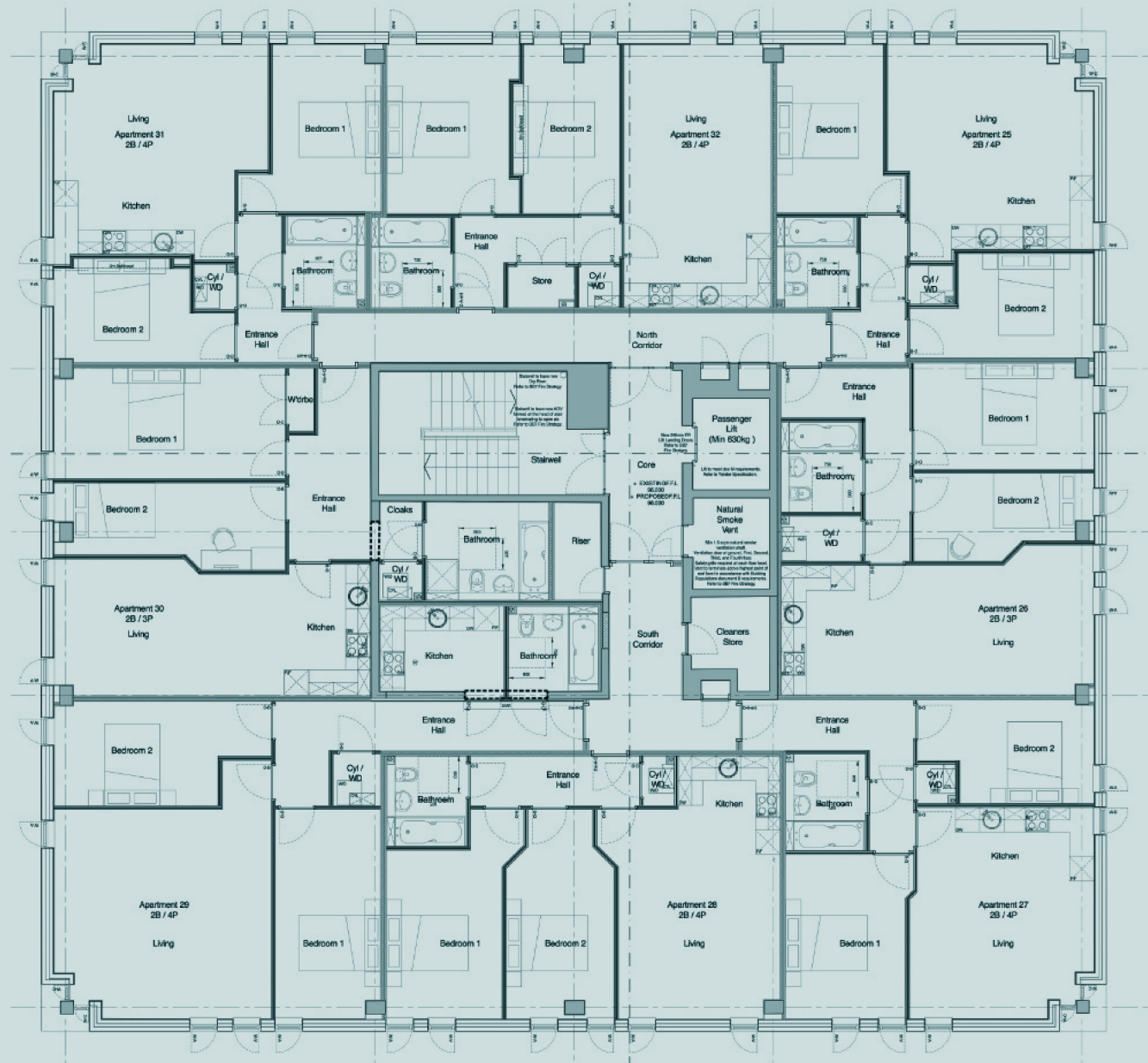
FLOORPLANS

1st Floor



FLOORPLANS

3rd Floor



FLOORPLANS

4th Floor

