



THE WORLD IS YOURS
TO EXPLORE

Riviera Beachfront ups the game of waterfront lifestyle for its residents with its perfect location overlooking the beautiful crystal lagoon and white sandy beaches. Walk along the beachfront and soak up the serene views and Mediterranean ambience. This destination, with its iconic association with the French Riviera, provides a pleasant, tranquil, and family-friendly environment.

AN IDYLIC WATERFRONT LIFESTYLE



Created with contemporary lifestyles in mind, Riviera offers intuitiveness and sophistication in every way. With premium wood joinery and finishings, bespoke integrated lighting, and Italian marble flooring, every detail of your home has been curated to perfection.

STEP INTO UNRIVALLED LUXURY



Created for those with elevated lifestyles, each apartment exudes airy, open floor plans with floor-to-ceiling balcony windows. With the ability to fully open up, the living space is extended, flooding in natural light and sweeping views across Downtown Dubai. With an effortless feeling of space and a functional design, Riviera is a modern-day classic in the making.

YOUR OWN PERSONAL REALM



Elegance and finesse are integral to the style of your living quarters. From the quartz stone countertops, integrated pendant lighting, natural wood elements to the built-in pantry - everything has been presented with flawless execution.



Modern in style yet beautifully functional, Riviera caters to those with a passion for living exceptionally well. Where you can define your standard of luxury - a place you don't just call home, but truly feel at home.



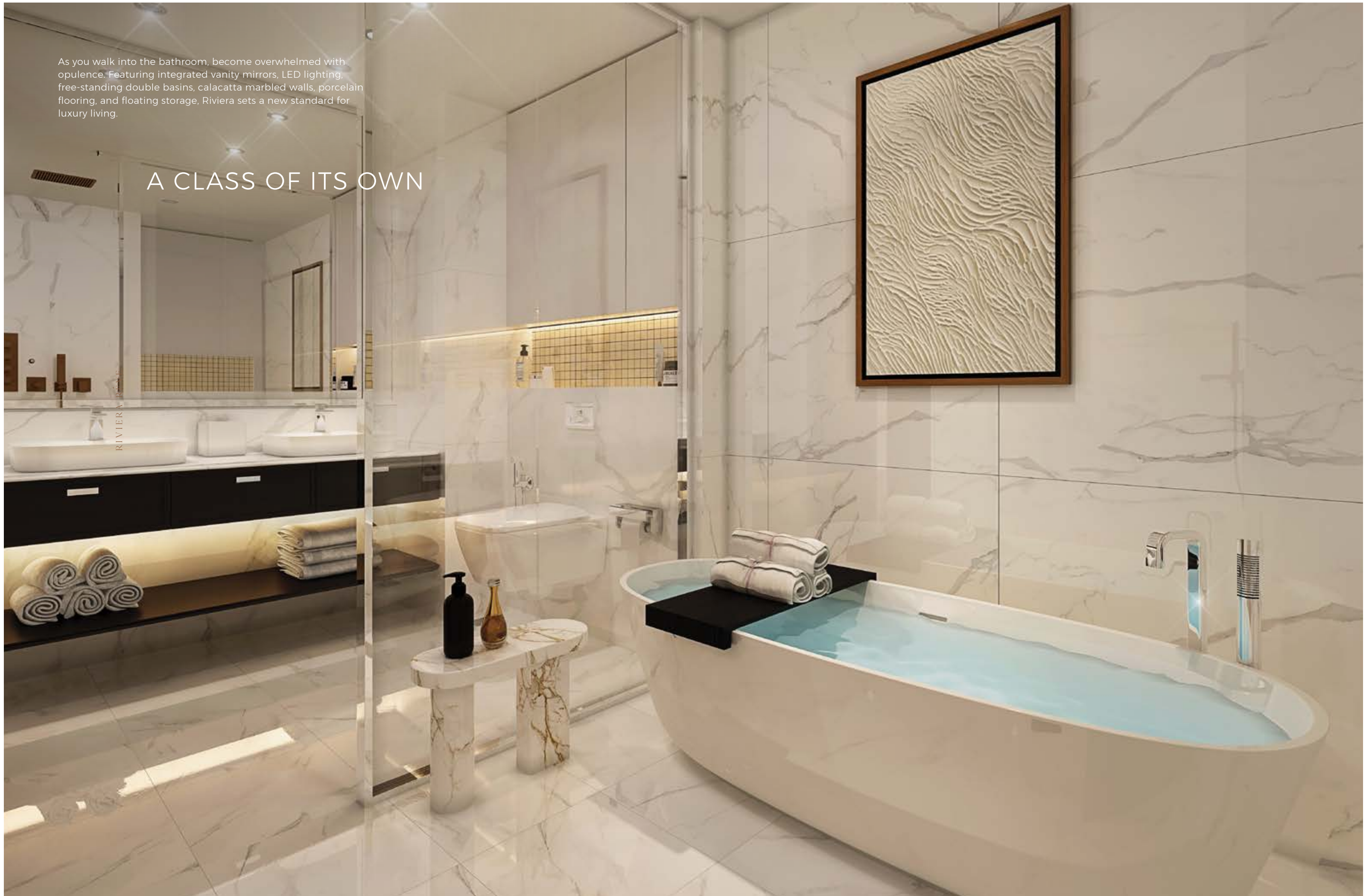
With the unexpected luxury of space, relish in the elegance of your master bedroom. Designed using an open, expansive plan surrounded by floor-to-ceiling glass, each master bedroom allows the morning light to flood in while offering panoramic views of the magnificent crystal lagoon.

SPACIOUS SPLENDOUR



As you walk into the bathroom, become overwhelmed with opulence. Featuring integrated vanity mirrors, LED lighting, free-standing double basins, calacatta marbled walls, porcelain flooring, and floating storage, Riviera sets a new standard for luxury living.

A CLASS OF ITS OWN

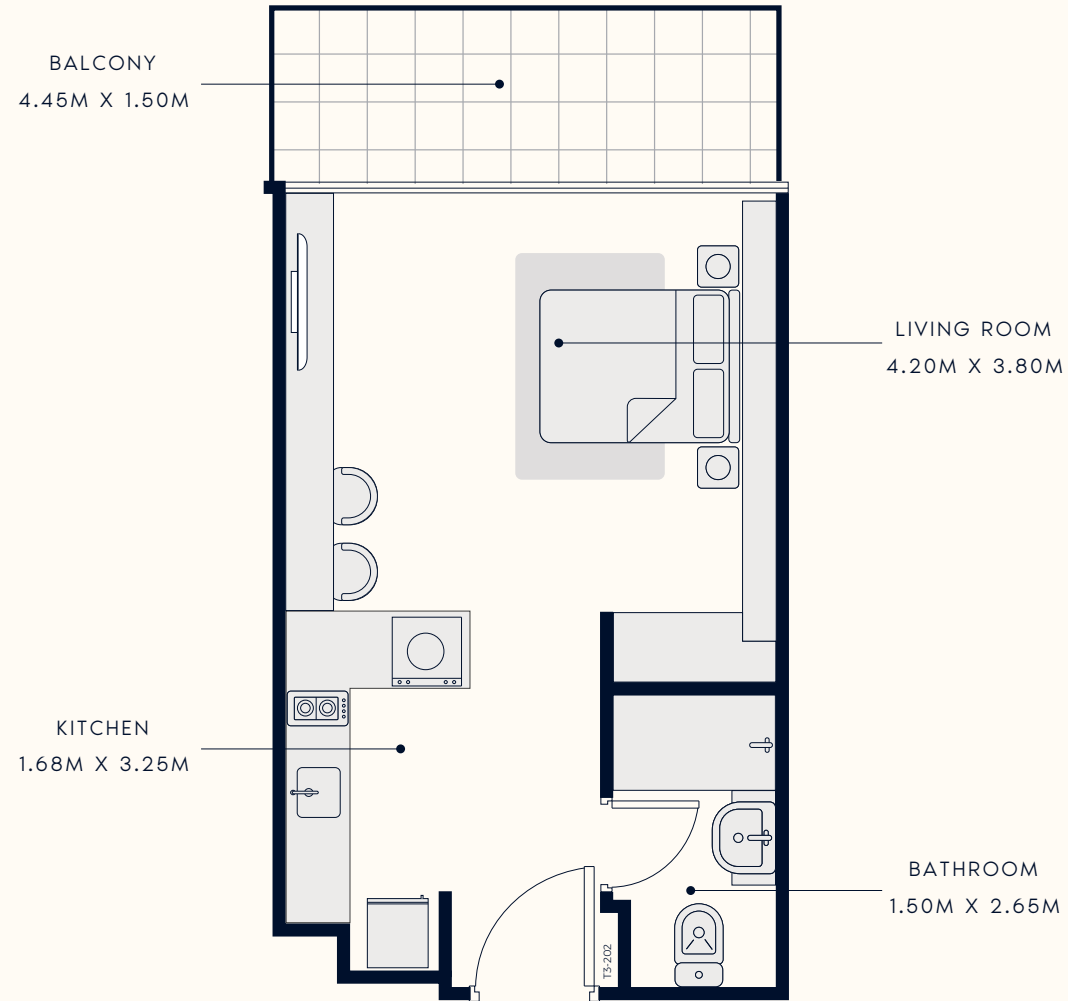


Bask in the glory of your very own private terrace overlooking magical views. Offering maximum seclusion in a tranquil setting, our lagoon-facing residences provide endless views across Dubai's iconic skyline. Dine, entertain or simply relax on your exclusive balcony and live the 'high-life' every day.

VIEWS, PRIVY TO FEW



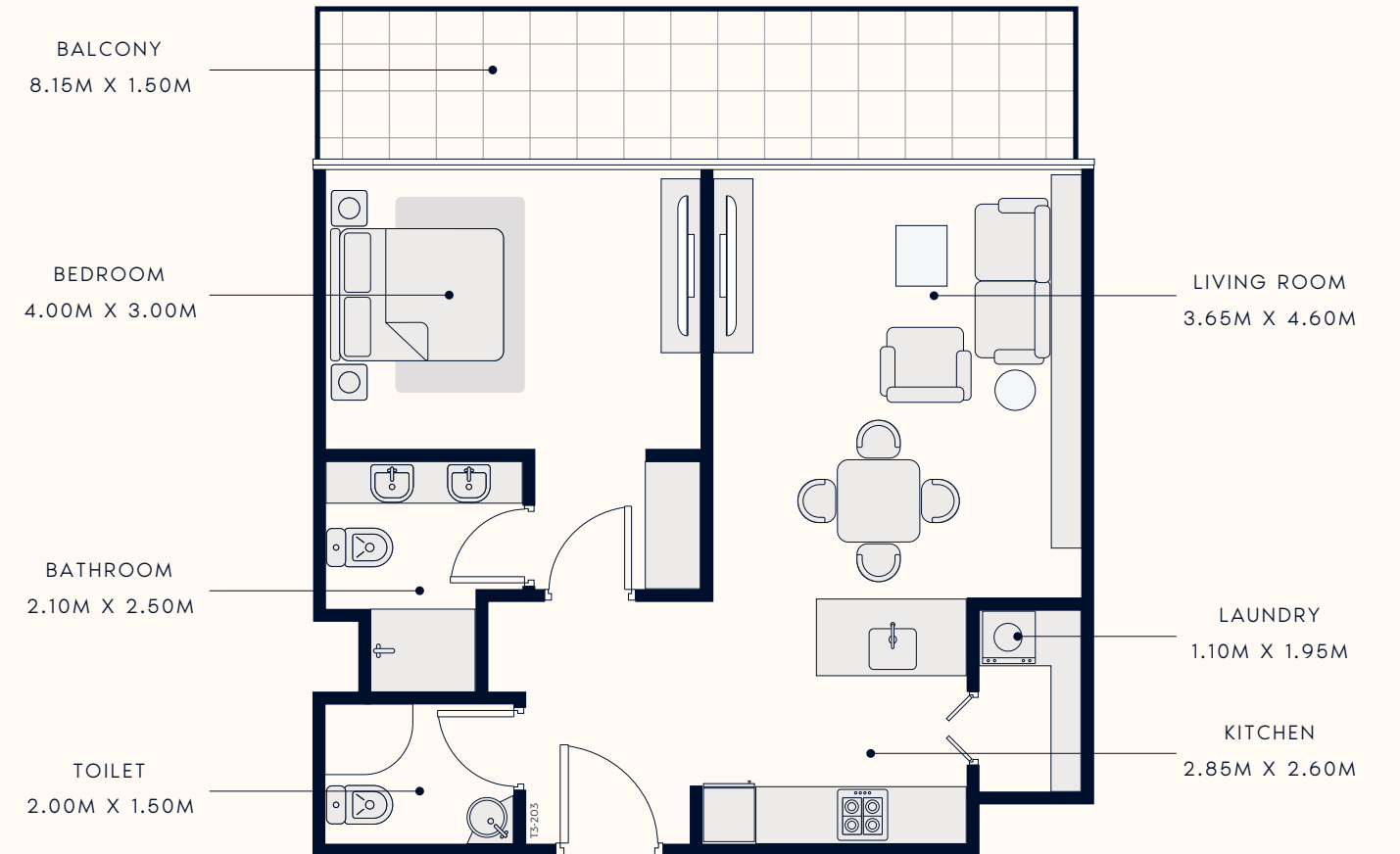
FLOOR PLAN
STUDIO TYPE 1
 1ST TO 18TH FLOOR



SUITE AREA : 364.36 SQ.FT
 TOTAL AREA : 444.55 SQ.FT

TYPICAL UNITS

FLOOR PLAN
1 BEDROOM TYPE 1
 1ST TO 26TH FLOOR



SUITE AREA : 647.77 SQ.FT
 TOTAL AREA : 793.19 SQ.FT

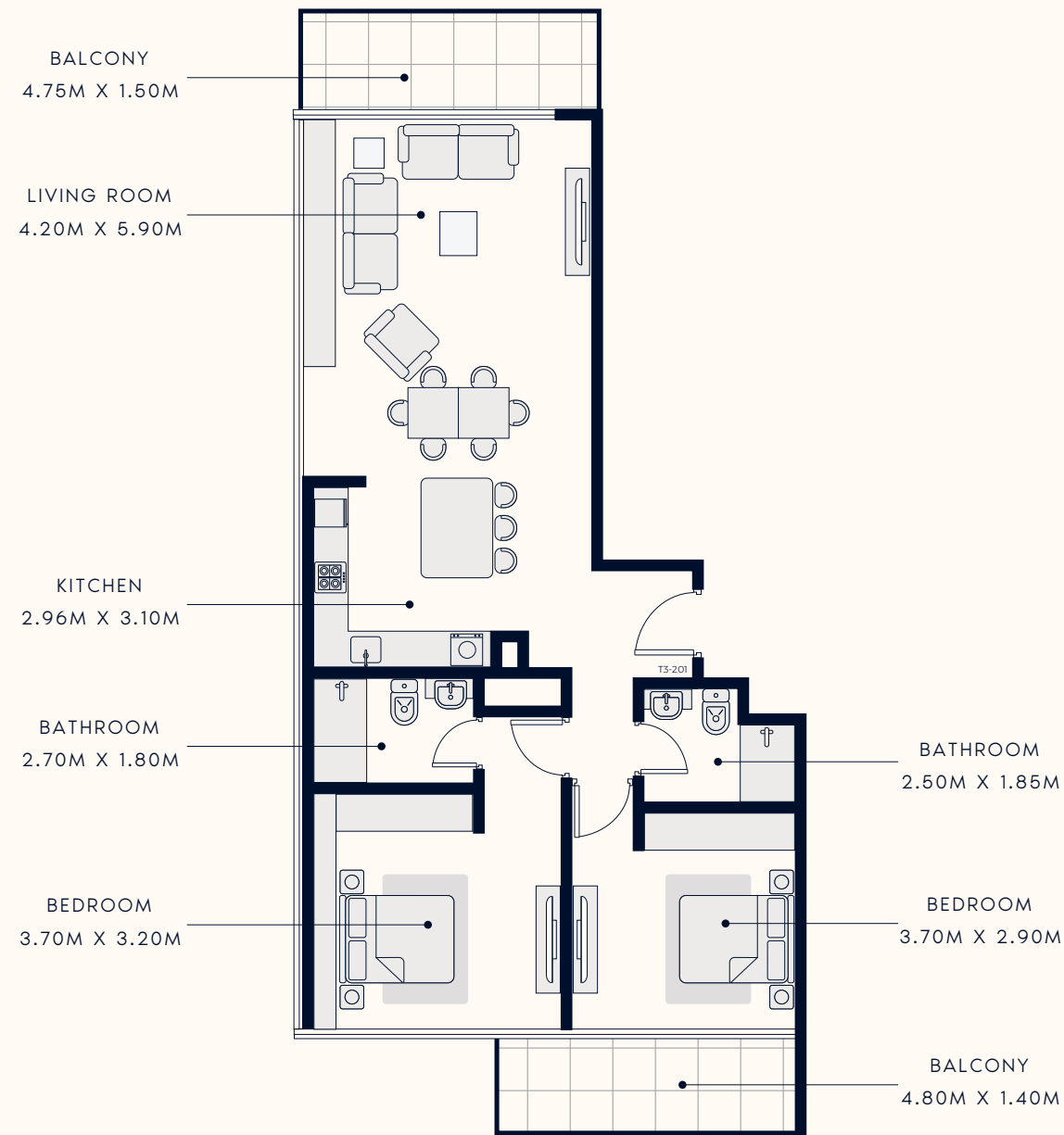
TYPICAL UNITS



FLOOR PLAN

2 BEDROOM TYPE 1

1ST TO 18TH FLOOR



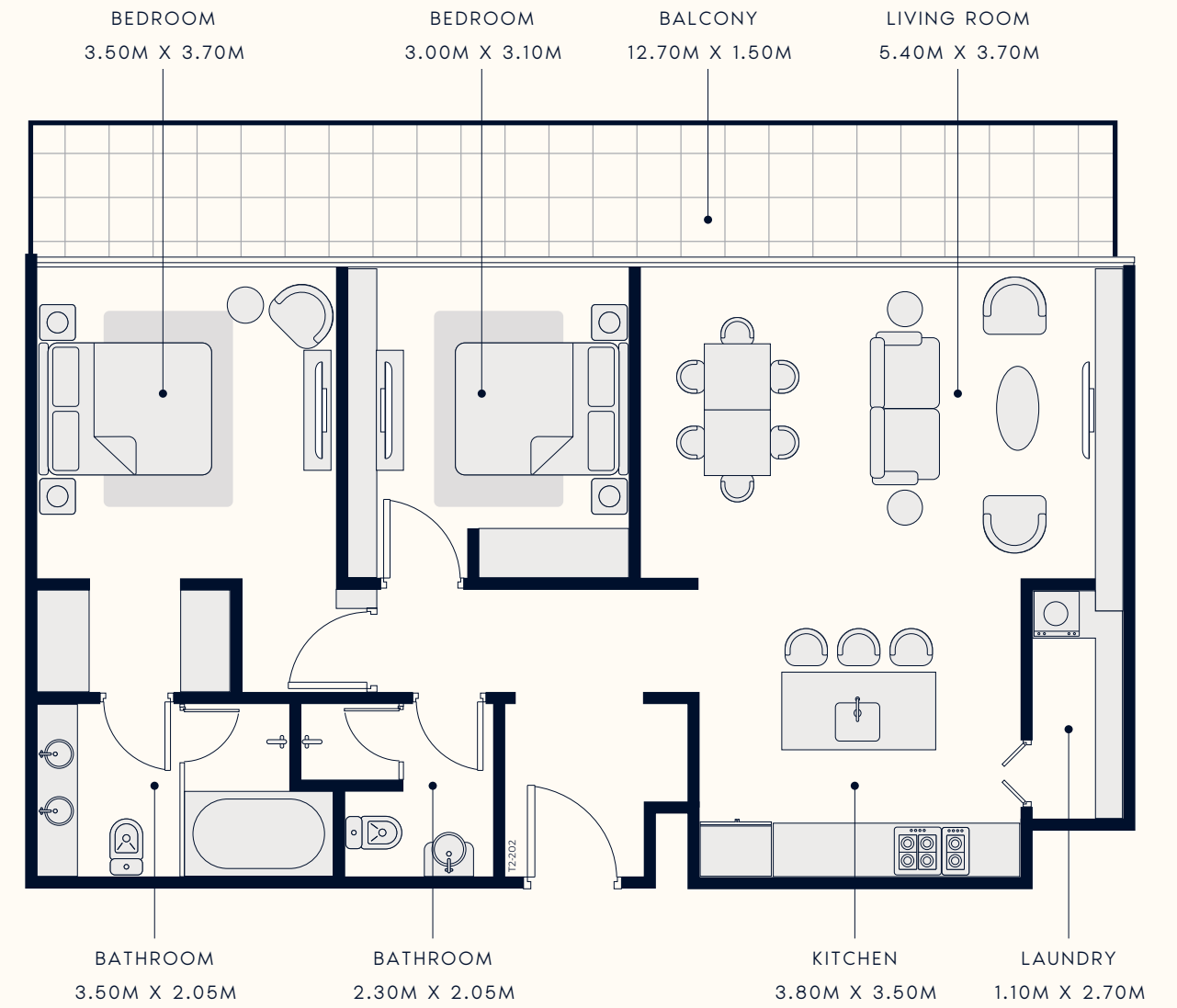
SUITE AREA : 1058.84 SQ.FT
TOTAL AREA : 1226.65 SQ.FT

TYPICAL UNITS

FLOOR PLAN

2 BEDROOM TYPE 2

2ND TO 18TH FLOOR



SUITE AREA : 1018.37 SQ.FT
TOTAL AREA : 1243.88 SQ.FT

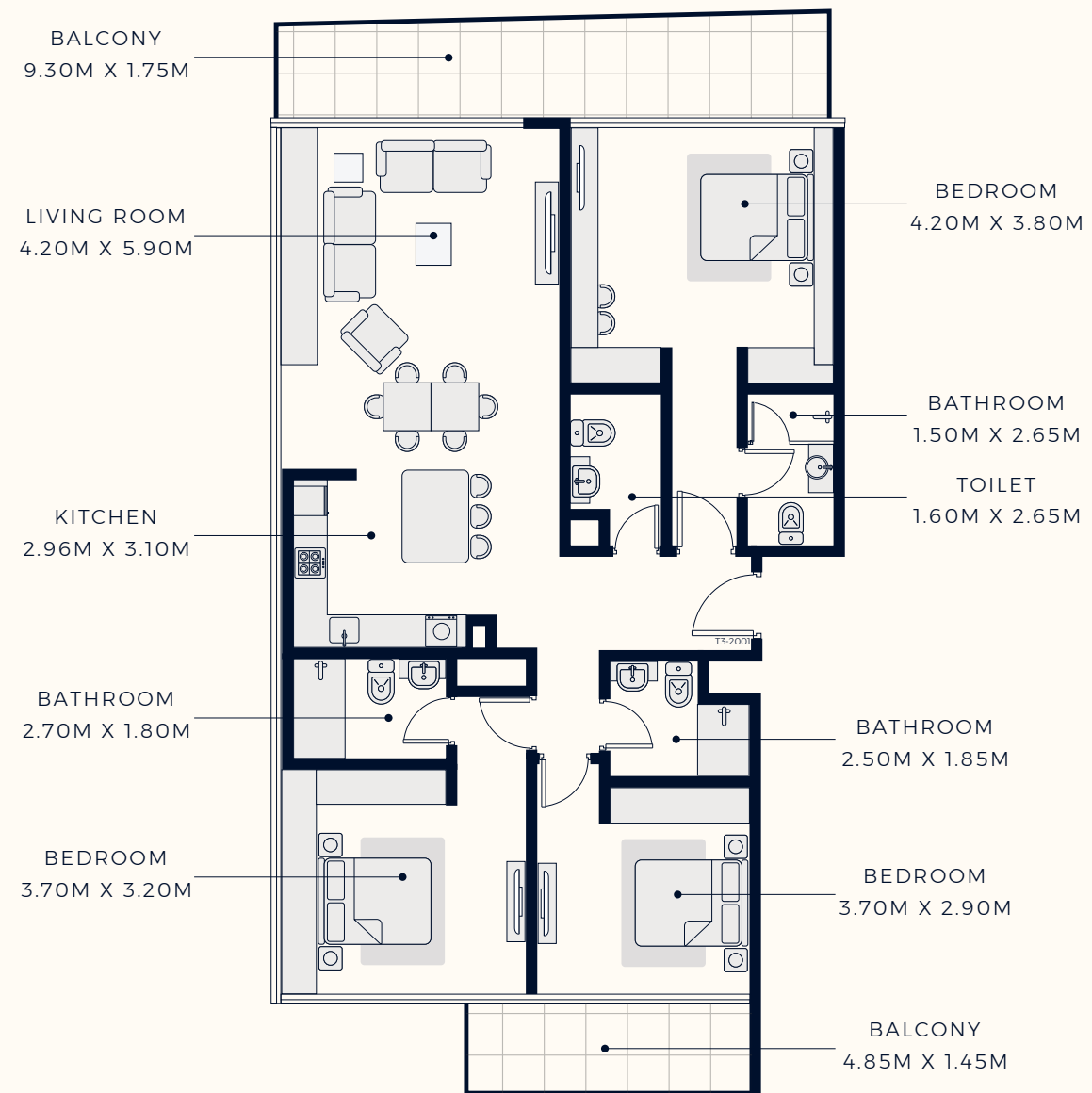
TYPICAL UNITS



FLOOR PLAN

3 BEDROOM TYPE 1

19TH TO 26TH FLOOR



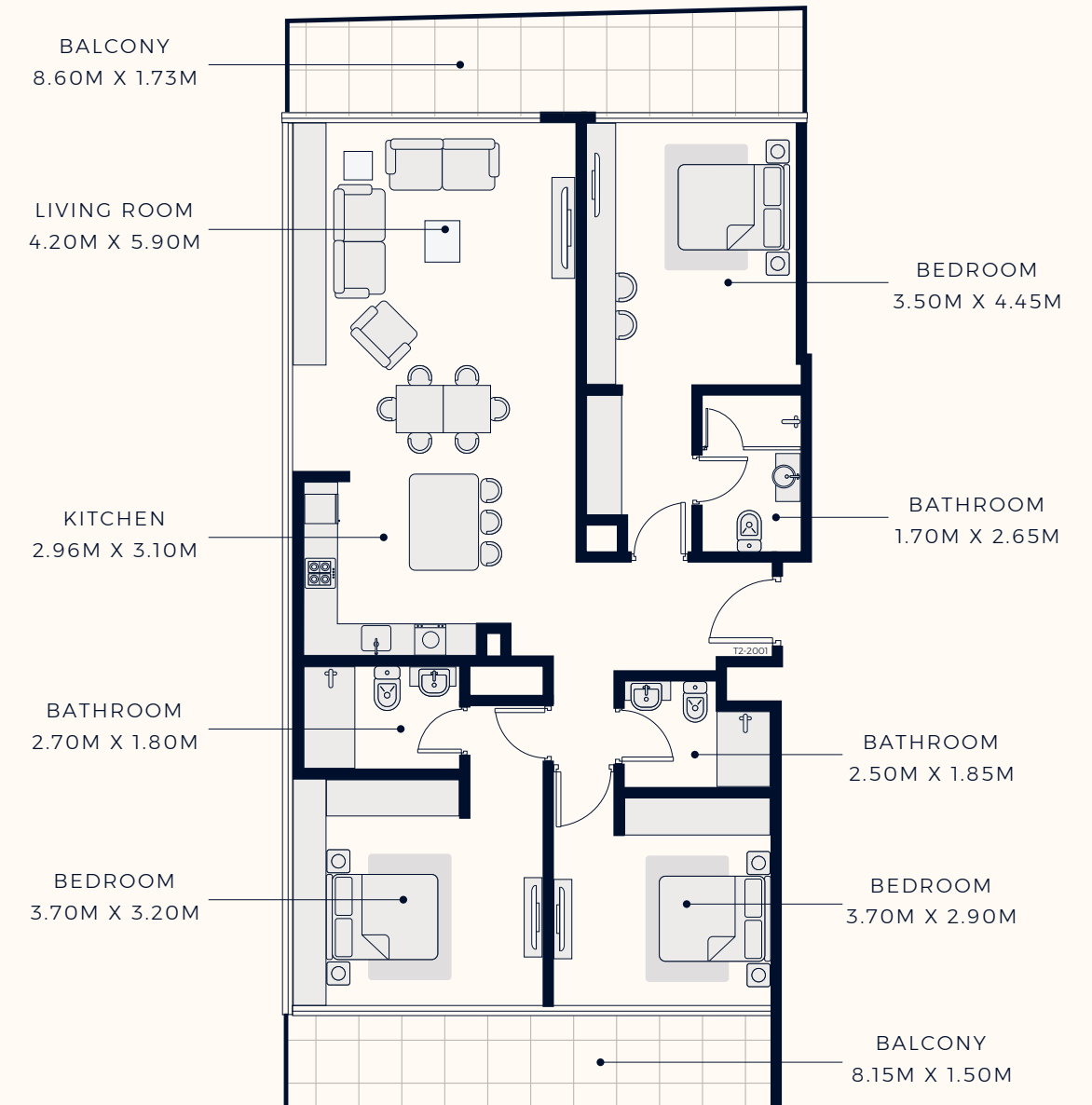
SUITE AREA : 1455.39 SQ.FT
TOTAL AREA : 1717.70 SQ.FT

TYPICAL UNITS

FLOOR PLAN

3 BEDROOM TYPE 2

19TH TO 26TH FLOOR



SUITE AREA : 1383.27 SQ.FT
TOTAL AREA : 1691.76 SQ.FT

TYPICAL UNITS

